

Overview of the NHDES Assessment Process

Understanding the 305(b)/303(d)

Matt Wood & Ken Edwardson
N.H. Department of Environmental
Services
August 16th, 2018



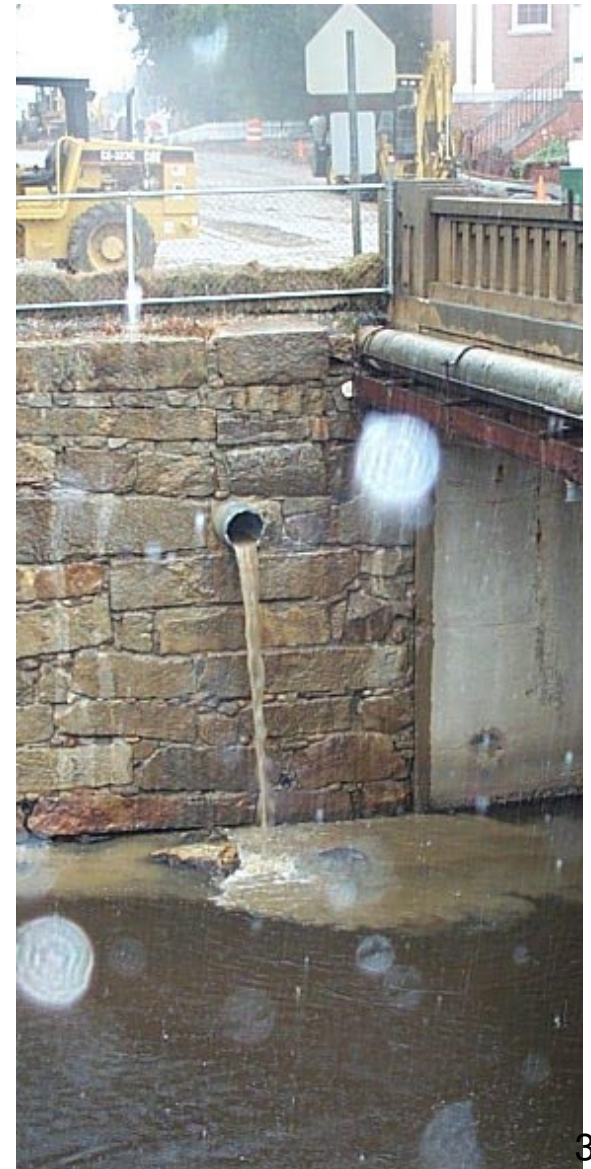
Topics for Today



1. Assessment Process Overview
2. CALM Overview
3. How to retrieve data
4. 'Changes' documents
5. View local examples
6. Discussion

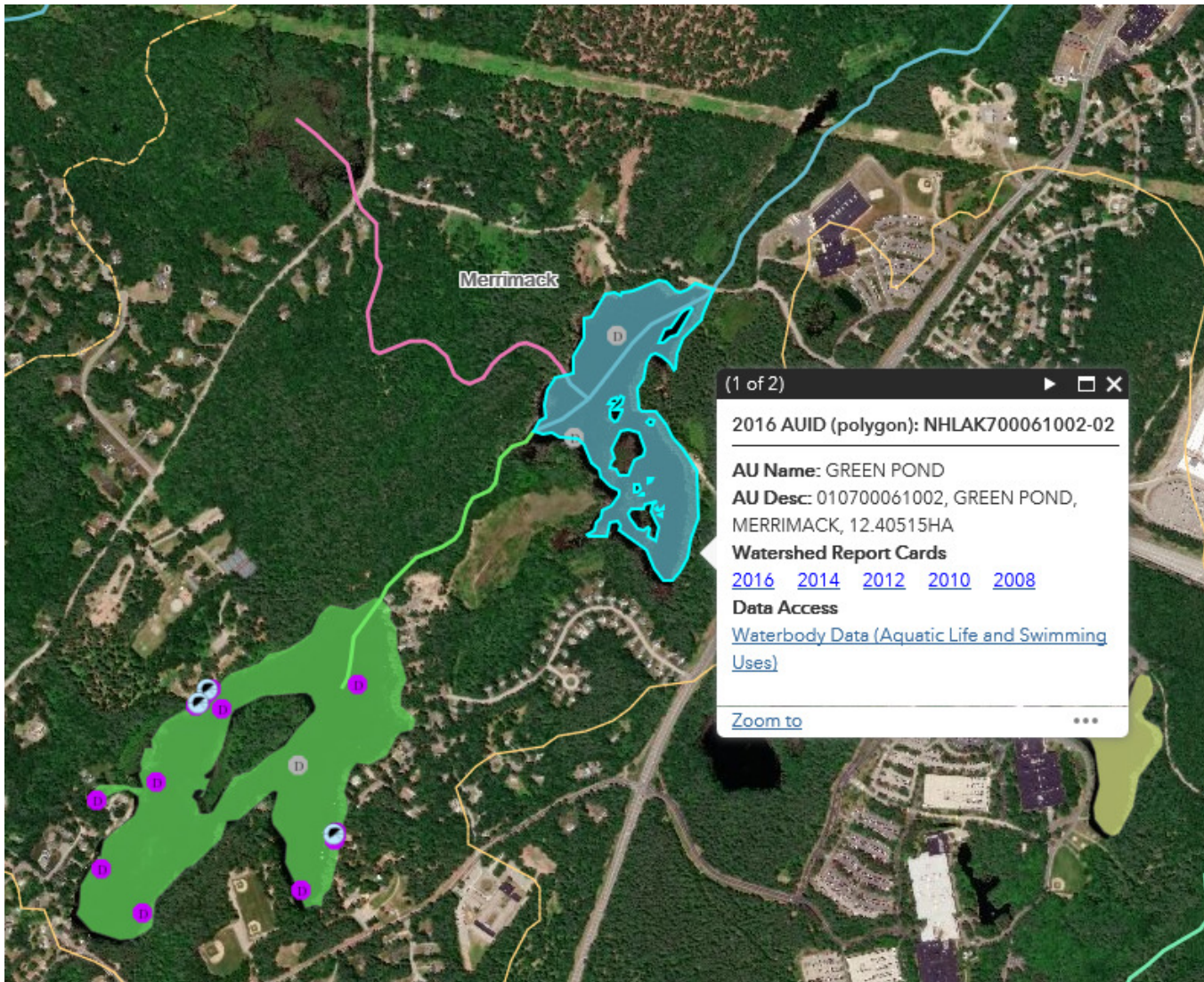
Assessment Overview

- Biennial report fulfills Federal & State requirements to assess water quality
- Completed biannually on even years
 - ..., 2014, 2016, 2018, etc.
- 305(b) = All assessments
 - 303(d) = Impairments that need a TMDL



Assessment Unit

- Spatial unit of record is the “Assessment Unit”



305(b) / 303(d) - Categories

- **Category 2** – Parameter meets water quality standards
- **Category 3** – Insufficient data to assess the parameter per the CALM

- **Category 5** – Parameter is a pollutant that requires a TMDL

- **Category 4** – Impairment per the CALM
 - **4A** = An EPA-approved TMDL has been completed
 - **4B** = A TMDL is not necessary since other enforceable controls are expected to attain water quality standards
 - **4C** = Not a pollutant but is causing impairment

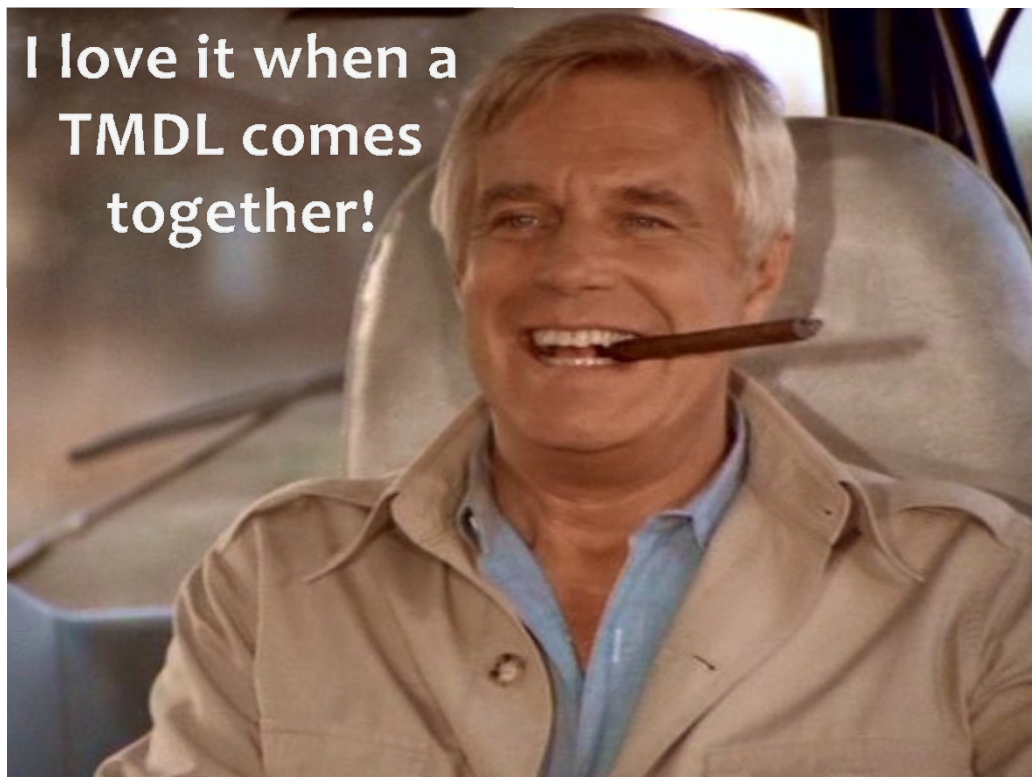
303(d) list



So what is a TMDL?

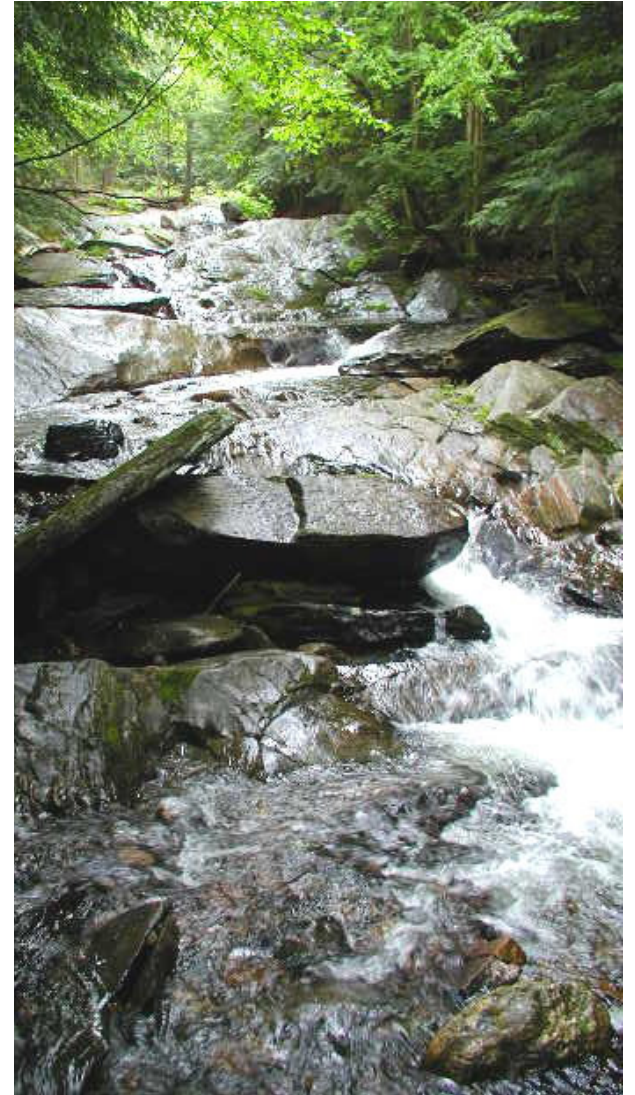
T.M.D.L. = Total Maximum Daily Load

- A plan for restoring impaired waters, which identifies the maximum amount of a pollutant that a body of water can receive while still meeting water quality standards



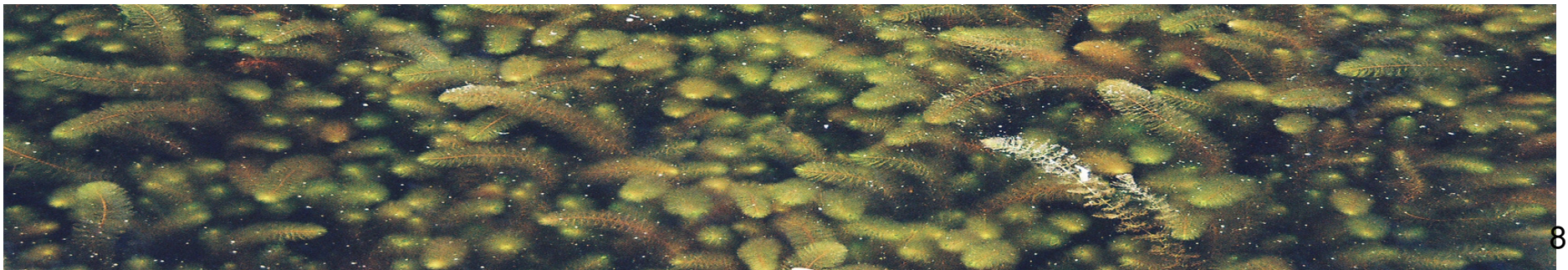
Assessment Overview

- Assessments are governed by the Water Quality Standards, Env-Wq 1700 & RSA 485-A:8
 - Designated Uses
 - Criteria - Numeric & Narrative
 - Antidegradation
- Consolidated Assessment & Listing Methodology (CALM) defines how we apply the Water Quality Standards to available data



What is the CALM?

- Translator document for how the water quality data will be used to make surface water quality attainment decisions by designated use, consistent with state surface water quality standards
- Like the 303(d), the CALM is available for public comment
- What kinds of things are in the CALM?

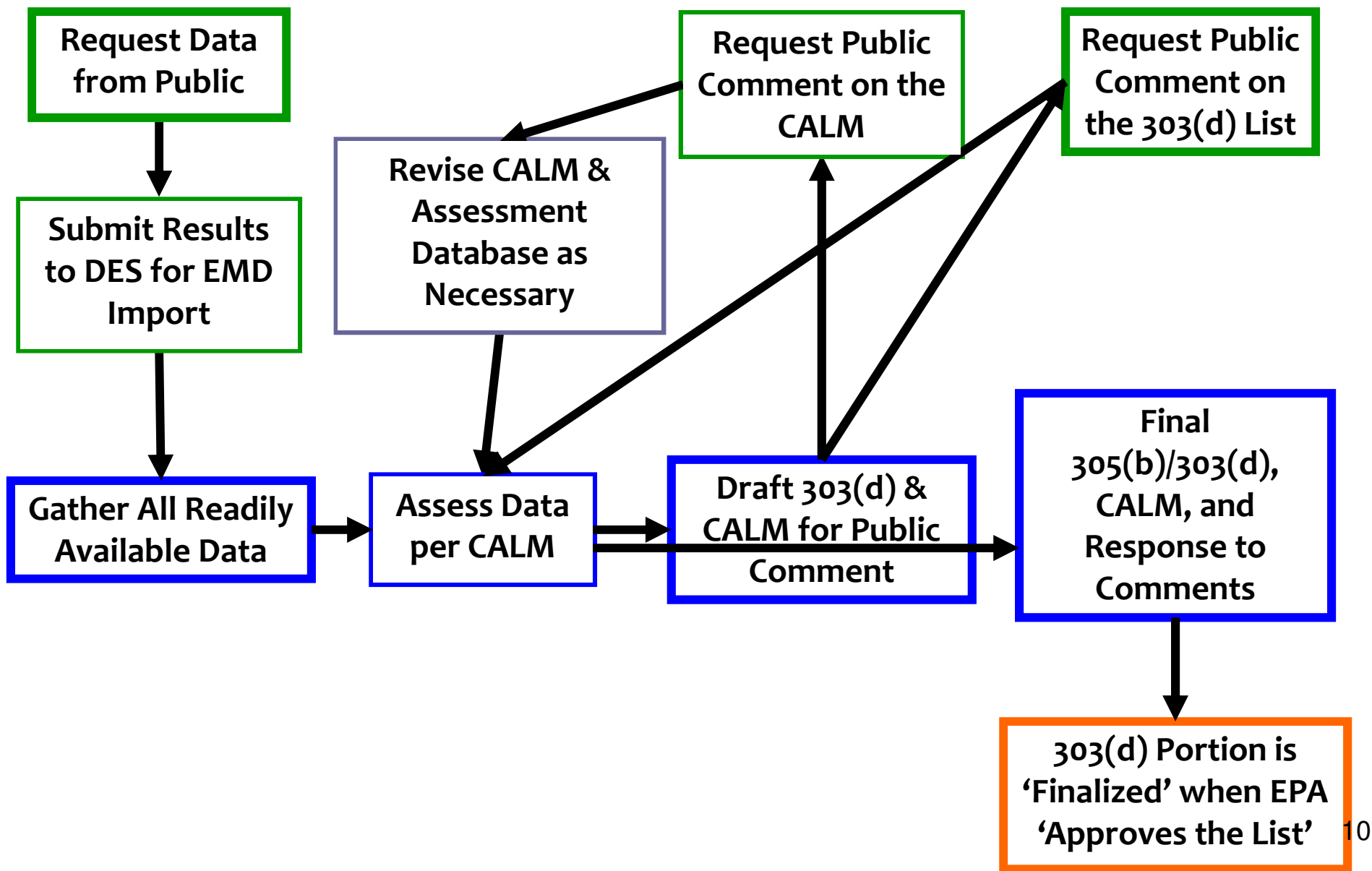


What's in the CALM?

- Core parameters for each use (i.e. bacteria for swimming use)
- Minimum number of samples
- Maximum age of samples
- How older data is treated
- When samples must be taken (seasonality, time of day, flow, ...)
- Where samples are collected (depth profiles, to compare with older data, ...)
- How multiple samples will be treated
- ...



Assessment Process



Data - Demystified

- In an assessment year – a request for data is sent out to over 2,000 individuals/organizations
- But... Data can be submitted at any time
- Needs supporting documentation to be used in assessment process

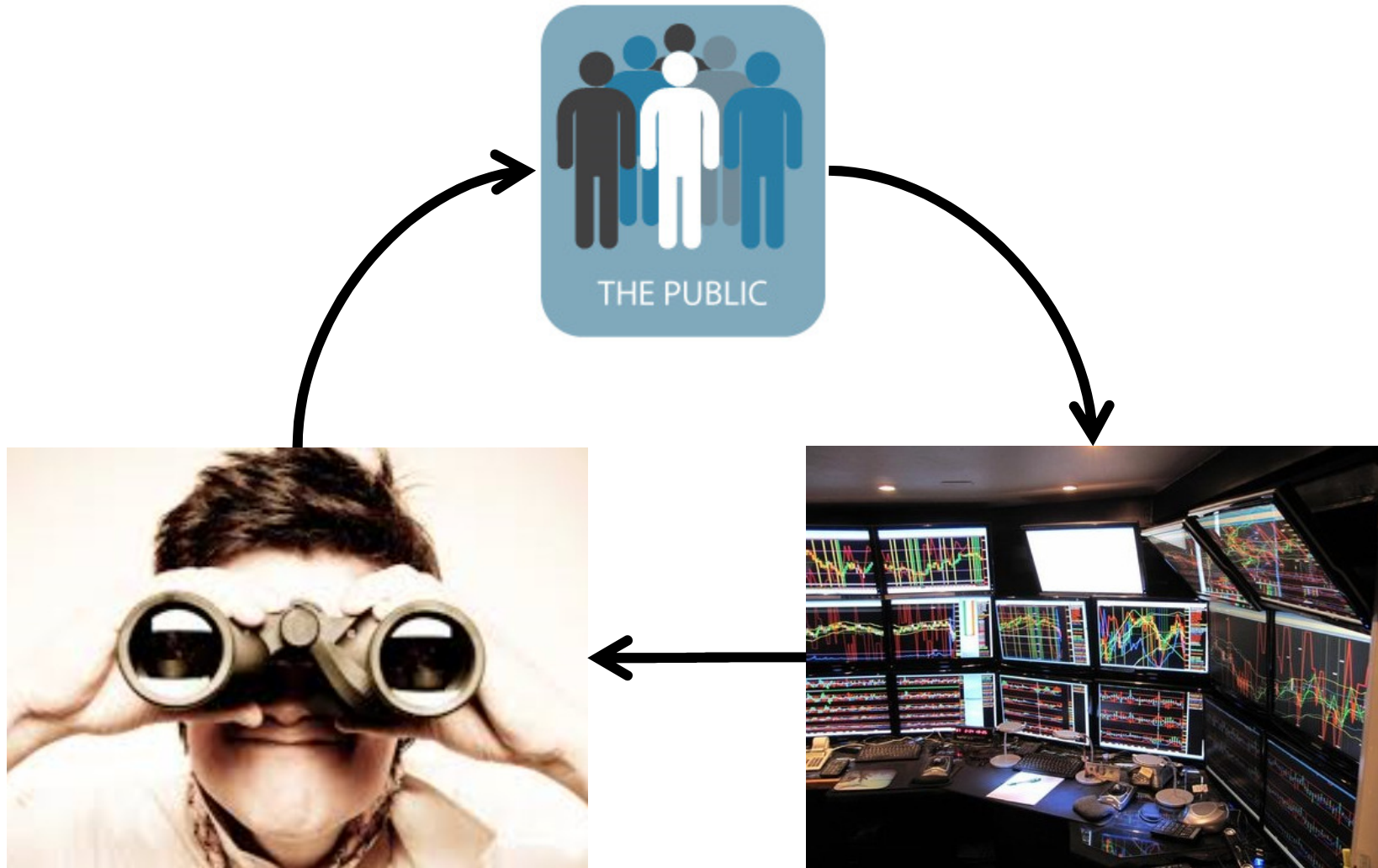
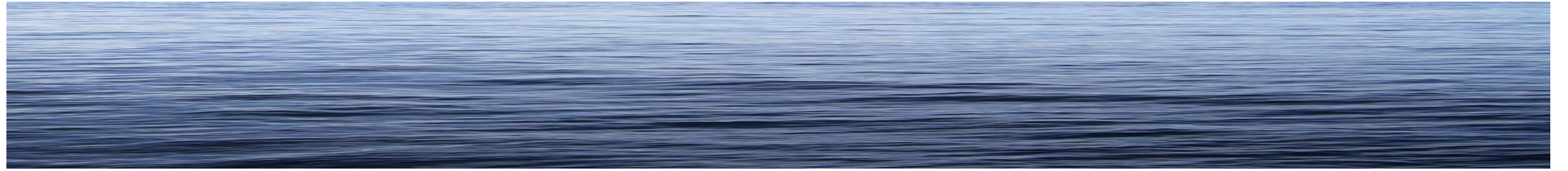
1. Low
2. Fair
3. Good
4. Excellent



<https://www.des.nh.gov/organization/divisions/water/wmb/swqa/documents/nhdes-w-07-024.pdf>

How do the Assessments Happen?





Where Do We Stand Today

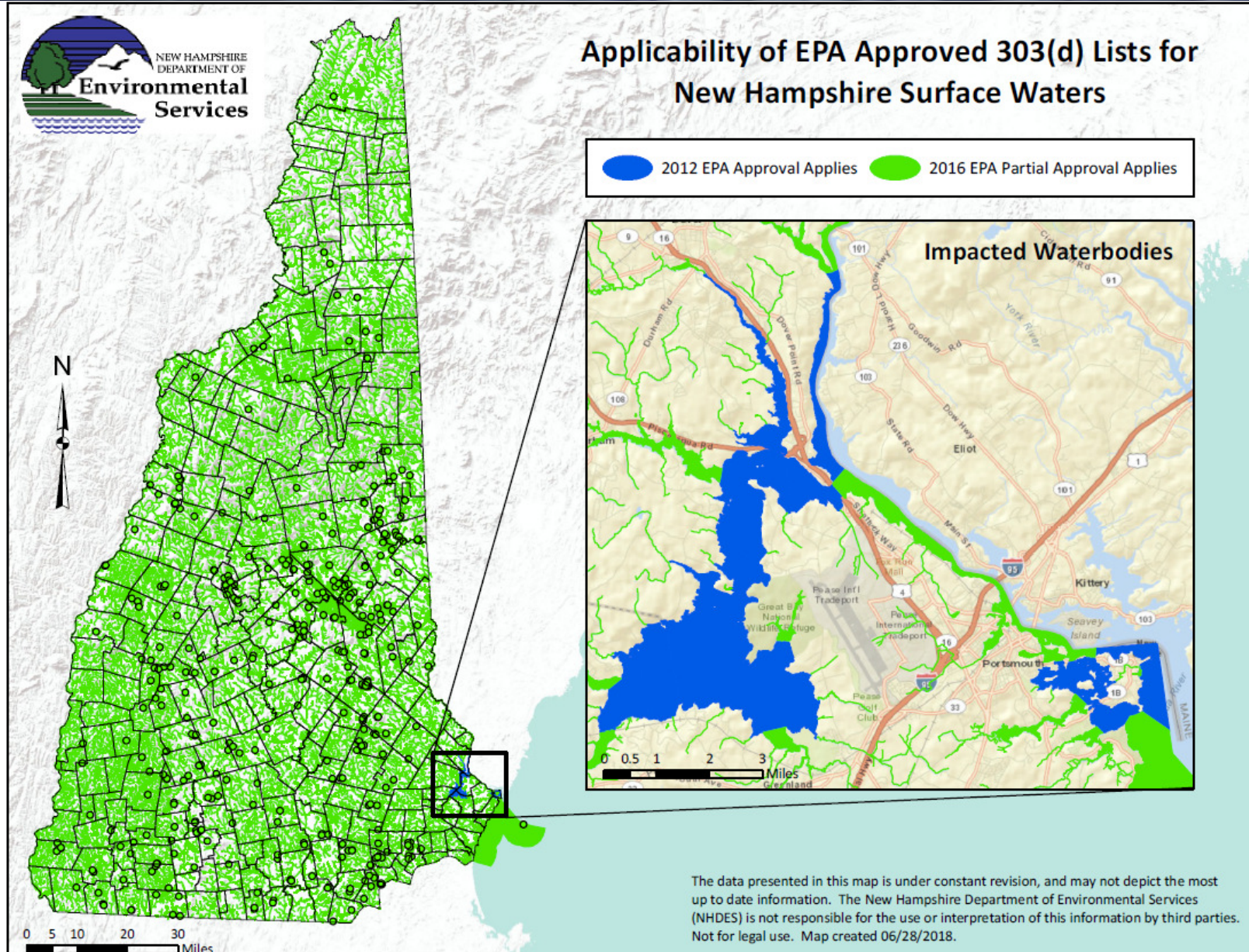
2012 – Full EPA Approval – September 24, 2015

2014 – Partial EPA Approval – March 16, 2018

2016 – Partial EPA Approval – June 22, 2018

2018 – Under Development

Where Do We Stand Today



Lets dig a little deeper

What resources are available



Accessing Assessment Data

- [Surface Water Quality Mapper and Watershed Report Cards](#)

About this Assessment Viewer

2016 Surface Water Quality Assessment Viewer

This tool was developed for users to,

- 1) see the spatial extent of assessment units,
- 2) see where sampling data was collected,
- 3) access the watershed report cards,
- 4) run reports to access the water quality data summaries covering the 2016 assessment cycle, and
- 5) view the extent of the EPA 2017 MS4 General Permit Areas.



Changes














Added

Lets go!

http://www4.des.state.nh.us/WaterShed_SWQA//SWQA_Map.aspx



Draft 303(d) Document Availability

2016, 303(d) List

- [EPA Partial Approval of New Hampshire's 2016, 303\(d\) List](#) (June 22, 2018) 
 - [Map of 303\(d\) List Applicability](#) 
- [Consolidated Assessment and Listing Methodology \(CALM\)](#) 
- [2016, 303\(d\) List Content Introduction](#) 
 - [Appendix A.1 - 2016, 303\(d\) List](#) 
 - [Appendix A.2 - 2016, 303\(d\)](#) 
 - [Appendix A.3 - Map of 303\(d\) Impaired Waters](#) 
 - [Waters Removed from the 303\(d\) List](#) 
 - [Waters Added to the 303\(d\) List Since 2014](#) 
 - [Appendix B - New Hampshire's Long-term 303\(d\) Vision](#) 
- [Response to Comments on the Draft 303\(d\) and CALM](#) 

Okay to use but will miss category 4s

Other related materials

- [Technical Support Document for the Great Bay Estuary Aquatic Life Use Support Assessments, 2016 305\(b\) Report/303\(d\) List](#) 
- [GIS Layers for the 2016 Assessment](#) 
- [Impairments Removed Since the 2014 305\(b\)](#) 
- [Impairments Added to the 2016 305\(b\)](#) 
- [Surface Water Quality Mapper and Watershed Report Cards](#)
- [2016 Status of Each Assessment Unit](#) 

This is what you want

<http://www.des.nh.gov/organization/divisions/water/wmb/swqa/2016/index.htm>

How do I Get a Water Off the 303(d) List

- Understand the Original Listing
 - Past Water Quality Data
 - Station, flow, water temp, preceding weather, time of day, season, etc.
- Has anything changed?

- We have some help for you

<https://www.des.nh.gov/organization/commissioner/pip/publications/documents/r-wd-17-20.pdf>



Visit Local Waters

- Pelham, NH
 - Long Pond
- Manchester, NH
 - Cohas Brook
- Nashua, NH
 - Merrimack River



Questions?

Matthew A. Wood, Water Quality Assessment Program Coordinator
NH Dept. of Environmental Services
Tel (603) 271-8868 Matthew.Wood@des.nh.gov

Ken Edwardson, Senior Scientist
NH Dept. of Environmental Services
Tel (603) 271-8864 Keneth.Edwardson@des.nh.gov

<http://des.nh.gov/organization/divisions/water/wmb/swqa/index.htm>

