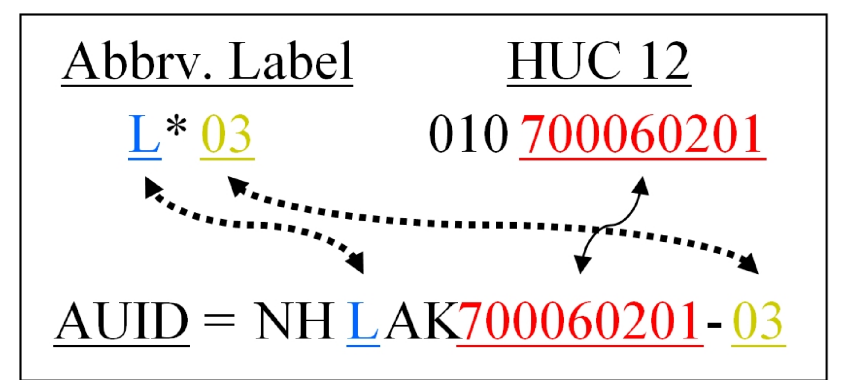


TOWN OF ROLLINSFORD NEW HAMPSHIRE

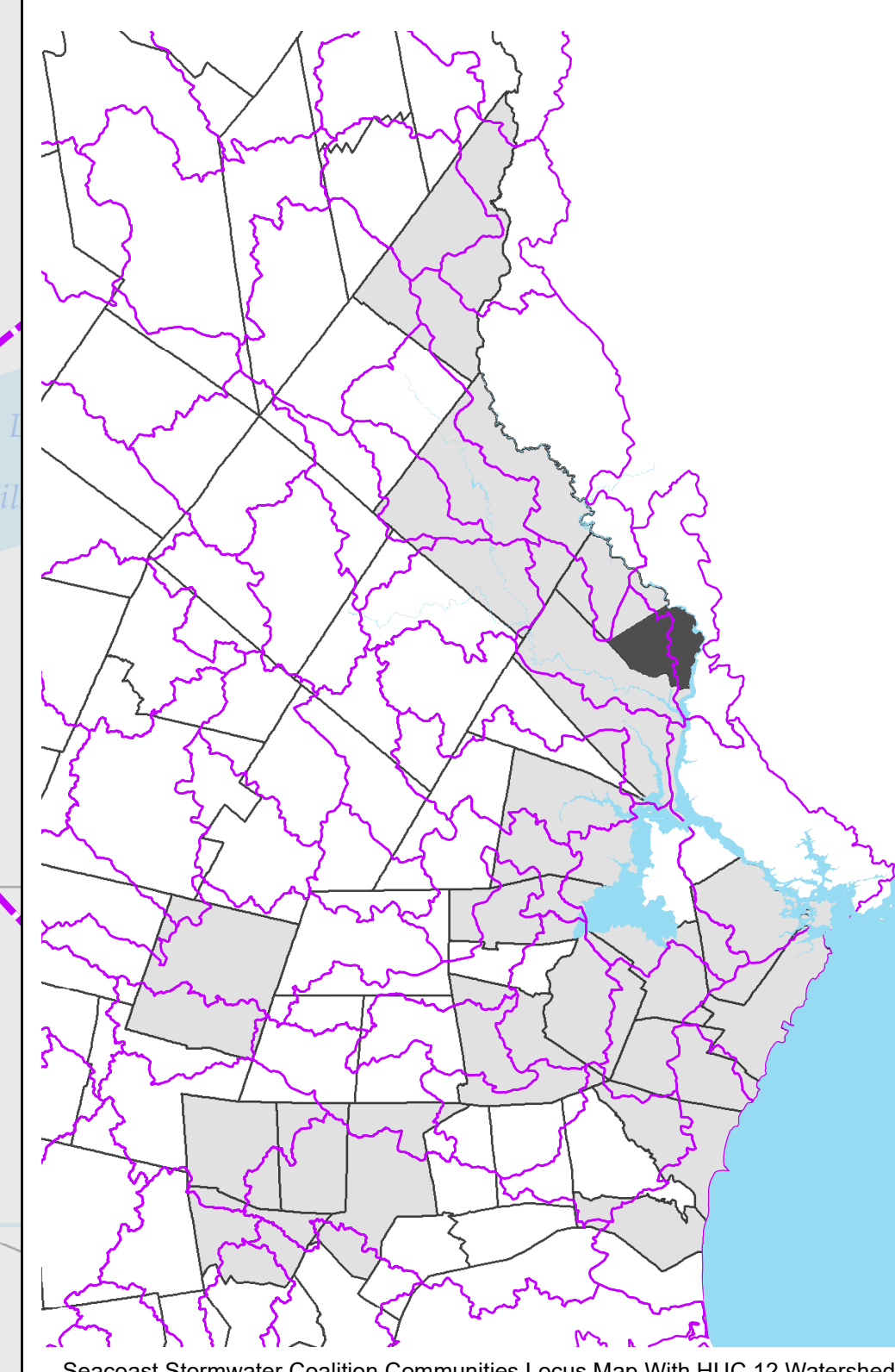
New Hampshire DES
303(d) Impaired Water
2016 Partially Adopted

Beach Area	Rivers Streams	Lakes Ponds	NH DES Category Description
			3-ND, 3-PA, 3-PNS - No data, insufficient data or limited data exists.
			Category 4 (4I) - There is an impairment by pollutant and a TMDL has been approved and completed. Or there is an impairment by a non-pollutant.
			Category 5-M - There is an impairment by pollutant which will require a TMDL.
			Category 5-P - There is an impairment by pollutant which will require a TMDL. This impairment causes poor water quality and is considered severe.
	HUC 12 Watershed Boundary		



Base Features

- Municipal Boundary
- MS4 Regulated Areas
- Water Features**
 - Surface Waterbody
 - Stream, River
- Roads by Legislative Class**
 - Class I & II Roads
 - Class IV Urban Compact Road
 - Class V Local Road
 - Private



A huge thank you to NH DES for their assistance in this mapping effort. Their patience, time, skill and guidance have been critical in this effort.

Surface Water Quality Assessments 305(b) and 303(d)

The Surface Water Quality Assessment Program produces two surface water quality documents every two years, the "305(b) Report" and the "303(d) List". As the two documents use the same data, the 305(b) Report and 303(d) List were combined into one Integrated Report starting in 2002. The Integrated Report describes the quality of New Hampshire's surface waters and an analysis of the extent to which all such waters provide for the protection and propagation of a balanced population of shellfish, fish, and wildlife, and allow recreational activities in and on the water.

The Federal Water Pollution Control Act [PL 92-500, commonly called the Clean Water Act (CWA)], as last reauthorized by the Water Quality Act of 1987, requires each state to submit two surface water quality documents to the US Environmental Protection Agency (EPA) every two years. Section 305(b) of the CWA requires submission of a report (commonly called the "305(b) Report"), that describes the quality of its surface waters and an analysis of the extent to which all such waters provide for the protection and propagation of a balanced population of shellfish, fish and wildlife, and allow recreational activities in and on the water.

The second document is typically called the "303(d) List," which is so named because it is a requirement of Section 303(d) of the CWA. The 303(d) List includes surface waters that are:

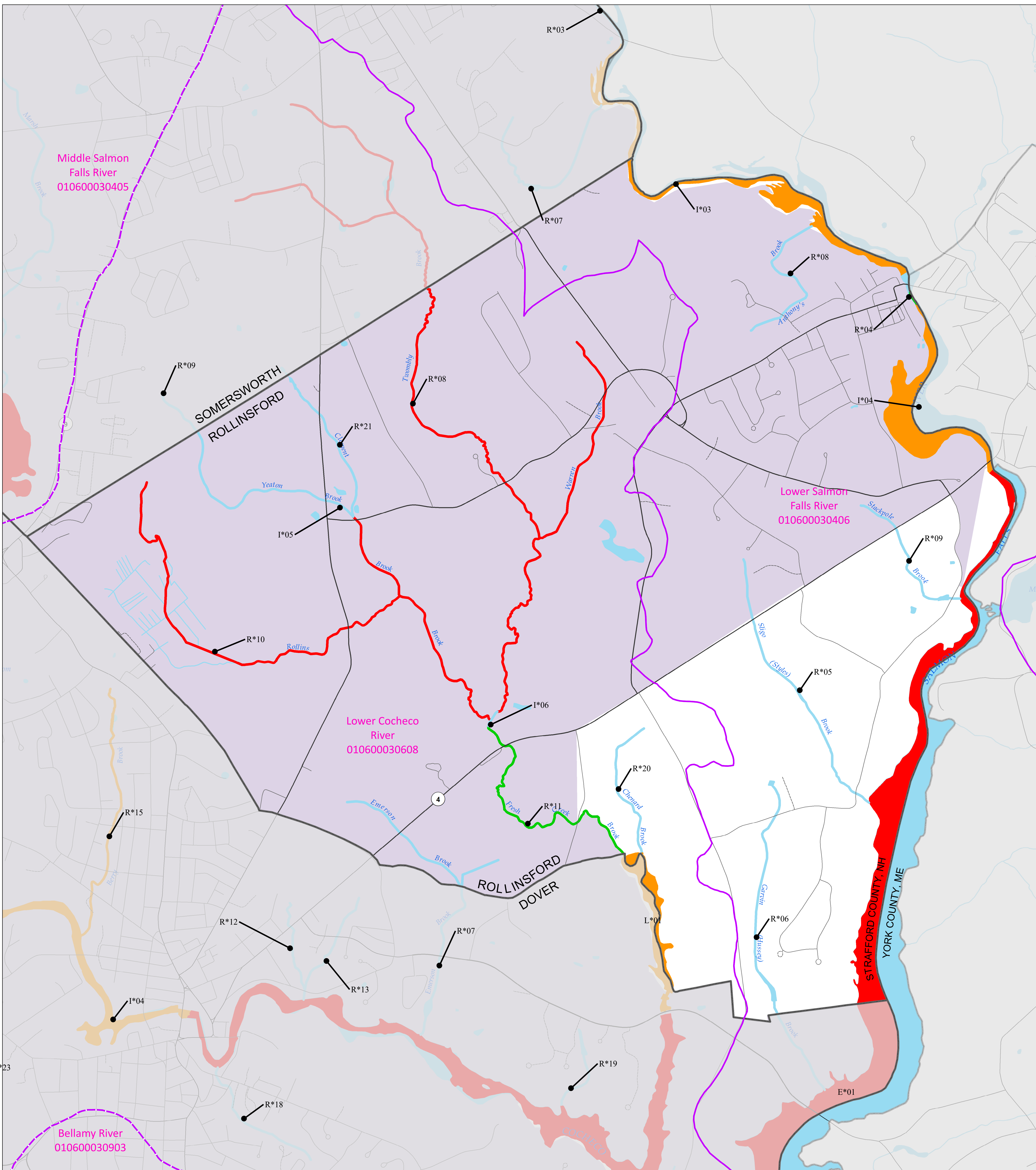
- > Impaired or threatened by a pollutant or pollutant(s).
- > Not expected to meet water quality standards within a reasonable time even after application of best available technology standards for point sources or best management practices for nonpoint sources.
- > Require development and implementation of a comprehensive water quality study (a Total Maximum Daily Load (TMDL) study) which is designed to meet water quality standards.

Data Sources
Base features from NH GRANIT database. Digital data in NH GRANIT represent the efforts of the contributing agencies to record information from the cited source materials. Earth Systems Research Center (ESRC), under contract to the Office of Strategic Initiatives (OSI), and in consultation with cooperating agencies, maintains a continuing program to identify and correct errors in these data. Neither OSI nor ESRC make any claim as to the validity or reliability or to any implied uses of these data.

Data Disclaimer
Data should be used for planning purposes only. Data were derived from various sources and were updated at different timeframes, with varying levels of accuracy. Please notify SRPC or RPC of any errors or omissions.



0 0.25 0.5 Miles



Middle Salmon Falls River
010600030405

Lower Salmon Falls River
010600030406

Lower Cocheco River
010600030608

Bellamy River
010600030903

*23