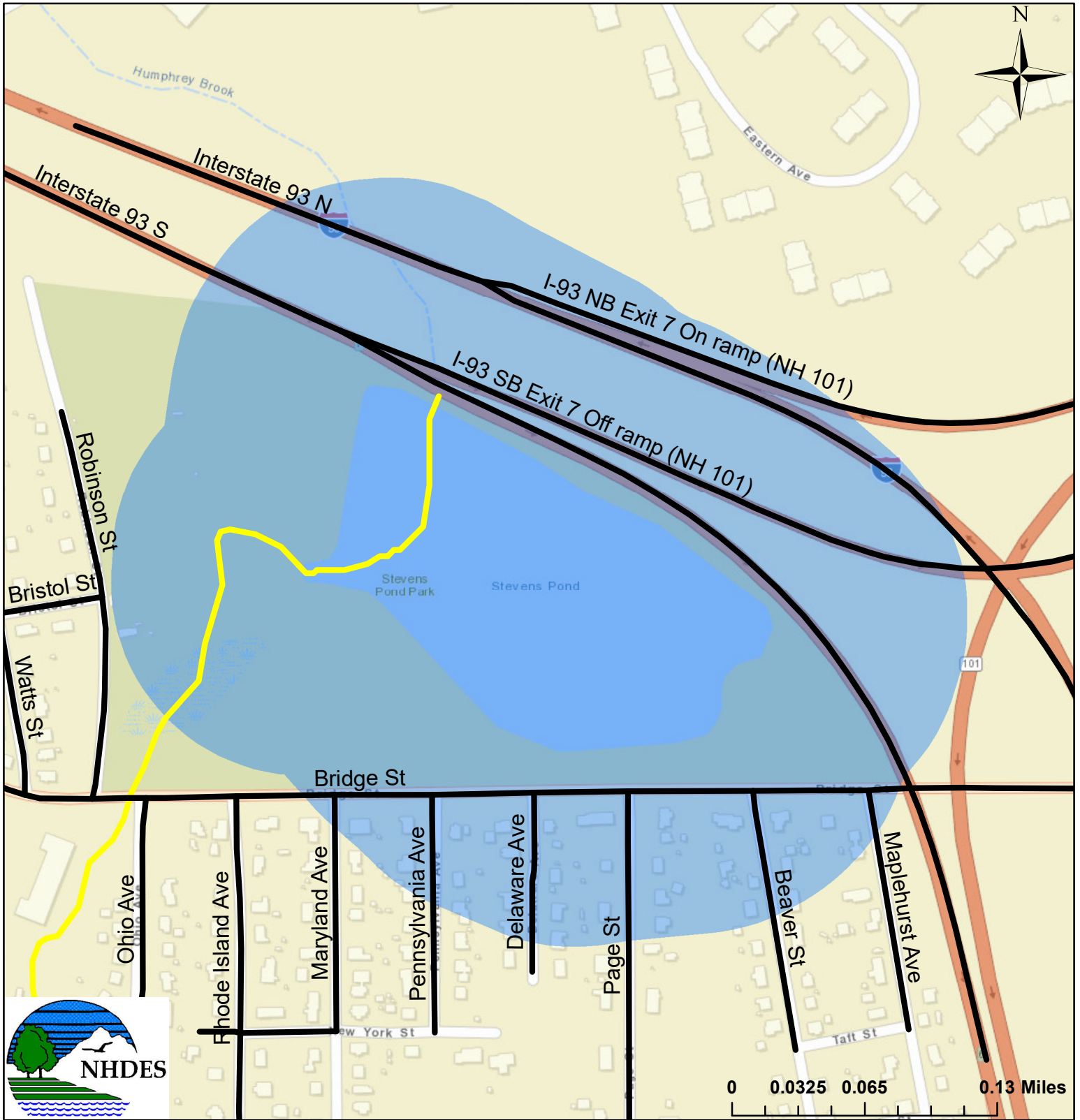







# 500 Foot Salt Buffer Zones

## STEVENS POND (NHLAK700060803-02)

### MANCHESTER



 <p>Road/highway segments within 500 feet of the impaired waterbody</p>	<p><b>500 foot buffers</b></p> <ul style="list-style-type: none"> <li> Impaired with TMDL</li> <li> Impaired without a TMDL</li> </ul>	<p><b>Waterbodies</b></p> <ul style="list-style-type: none"> <li> Approved TMDL</li> <li> Impaired Waterbody</li> </ul>
---	--	---

The data presented is under constant revision, and may not depict the most up to date information. The New Hampshire Department of Environmental Information (NHDES) is not responsible for the use or interpretation of this information by third parties. Not for legal use.