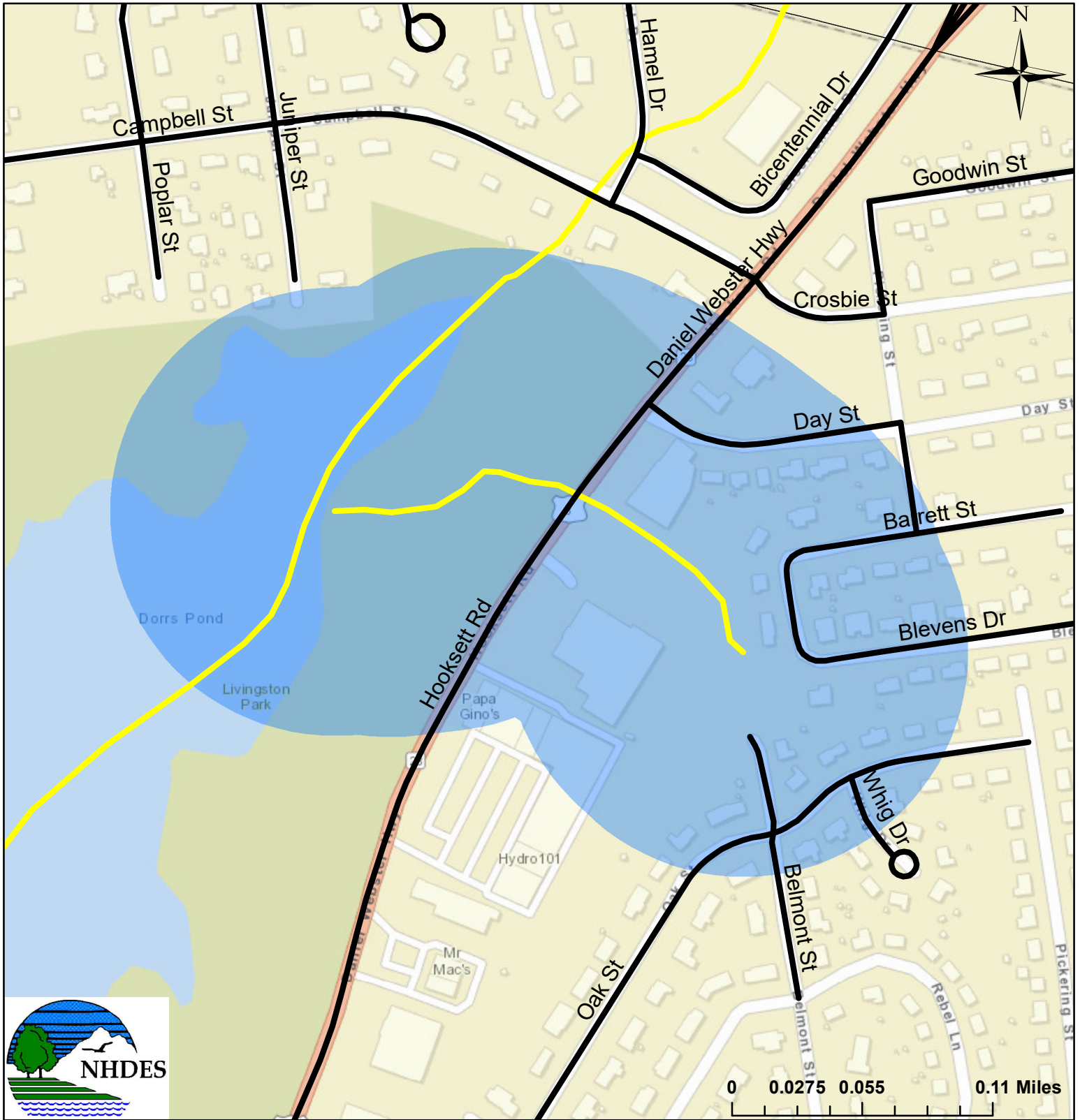


# 500 Foot Salt Buffer Zones

## DORRS POND-E INLET (NHRIV700060802-16)

### MANCHESTER



Road/highway segments within 500 feet of the impaired waterbody	500 foot buffers	Waterbodies
	Impaired with TMDL	Approved TMDL
	Impaired without a TMDL	Impaired Waterbody

The data presented is under constant revision, and may not depict the most up to date information. The New Hampshire Department of Environmental Information (NHDES) is not responsible for the use or interpretation of this information by third parties. Not for legal use.